

SUDOSCAN | S

DO YOU IDENTIFY WITH ANY OF THESE CONDITIONS?



Being Overweight



Family History
of Diabetes



Having Diabetes
While Pregnant



Not Eating Fruits &
Vegetables Regularly



Not Exercising Daily



Taking Medication for
High Blood Pressure

IF YES, YOU COULD HAVE A HIGHER RISK OF DEVELOPING SERIOUS HEALTH COMPLICATIONS CAUSED BY DIABETES



Blindness



Kidney Failure



Heart Disease











Stroke



Loss of toes, feet,
or legs

*Diabetes and its complications can be
PREVENTED and **REVERSED** if detected early*

Are You Experiencing Any of These Symptoms?

-  Burning or tingling in your feet
-  Dizziness or fainting when you stand up
-  Abnormal sweating (too much or too little)
-  Urinary problems
-  Sexual difficulties
-  Nausea or fullness after eating only a few bites
-  Shortness of breath when exercising
-  Feet that are cold or have dry skin



9 out of 10
people do **not** know
they have pre-diabetes



If you have these risk factors or symptoms,
ask your doctor how the non-invasive
SUDOSCAN S test can measure the health
of your small nerves, an indicator for
developing diabetes complications, to
help define and track a treatment to
REVERSE YOUR CONDITION

WHY WAIT IF YOU CAN DISCOVER IN LESS THAN 3 MINUTES IF YOUR HEALTH IS IN CHECK?

Ask your doctor about the non-invasive 3 minutes test.

Are you healthy?

The SUDOSCAN S test measures small nerve damage in your hands and feet that can happen early in pre-diabetes and diabetes. SUDOSCAN S can identify your risk and help your doctor define a personal health & lifestyle program.

SUDOSCAN S Health Screening Test:

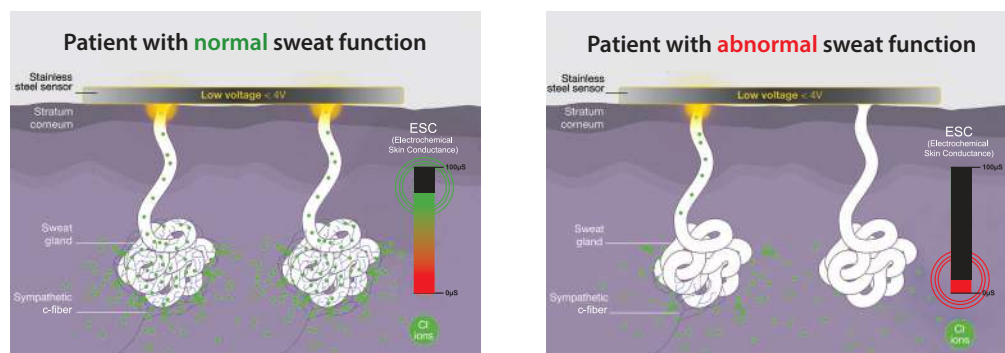
- ❖ Non-invasive and painless
- ❖ Quick, 3 minutes test that requires no preparation
- ❖ Personalized & quantitative patient report
- ❖ Evidence-based clinical results
- ❖ Helps monitor the progression of your health to develop the right treatment plan



Patient places palms of hands and soles of feet on the smart electrode plates for a 3-minute non-invasive test.

Learn about the science behind SUDOSCAN S

SUDOSCAN S is a patented technology that evaluates sweat gland function which is controlled by small nerves like those for pain sensation. SUDOSCAN S measures the ability of the sweat glands to release chloride ions in response to a small electrical stimulus on the palms of the hands and soles of the feet. SUDOSCAN S evaluates small nerves and their ability to regenerate, which allows your doctor to monitor the progression of your health in order to identify if your treatment plan is effective.



impetomedical Tel: 858 450 2800 | www.sudoscan.com | SUDOSCAN S medical device is FDA cleared

Internal reference: FLP-02-EN-201904-USA